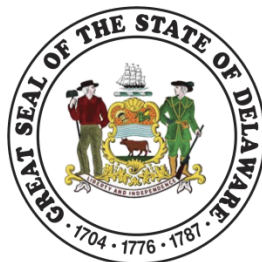


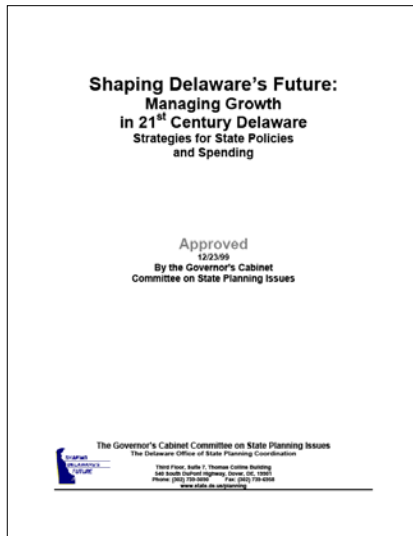
2015 Update

Delaware Strategies for State Policies and Spending

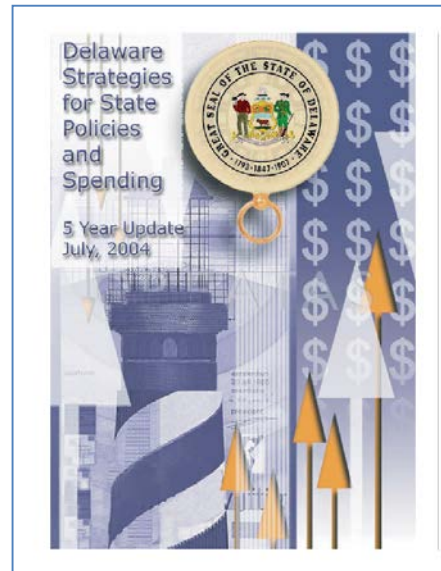
October 2015



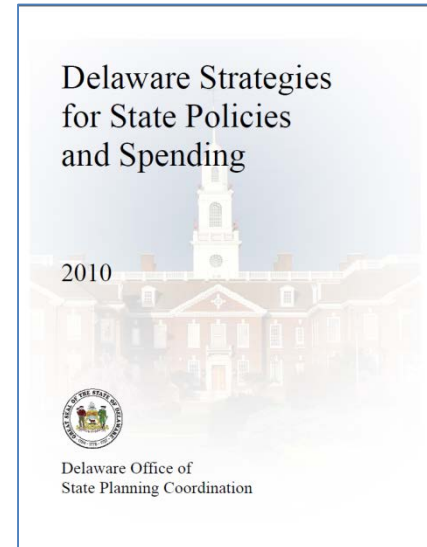
Previous Strategies Versions



1999

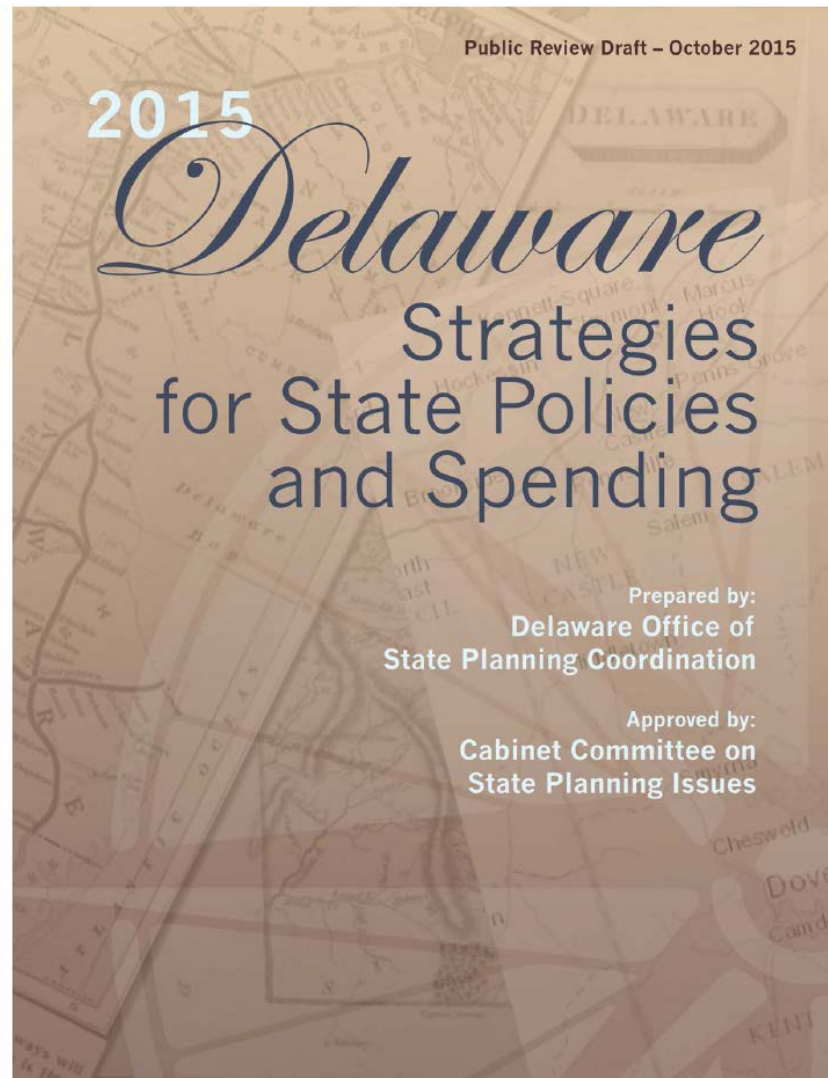


2004



2010

2015 Update



Origination of the State Spending Strategies

- Cabinet Committee on State Planning Issues - 1994
- Responsibilities from Del Code, §9101, Title 29:
 - “The Committee shall consider matters relating to the orderly growth and development of the State, including, but not limited to:” recommendations for the most desirable general pattern of land use
 - Instructed State Planning Coordination Office to develop the **Strategies for State Policies and Spending** to guide decisions.

Delaware Code Requirement

- Today the State Strategies is required by Delaware Code
- Title 29, Chapter 91, Section 9101 (c) (5):

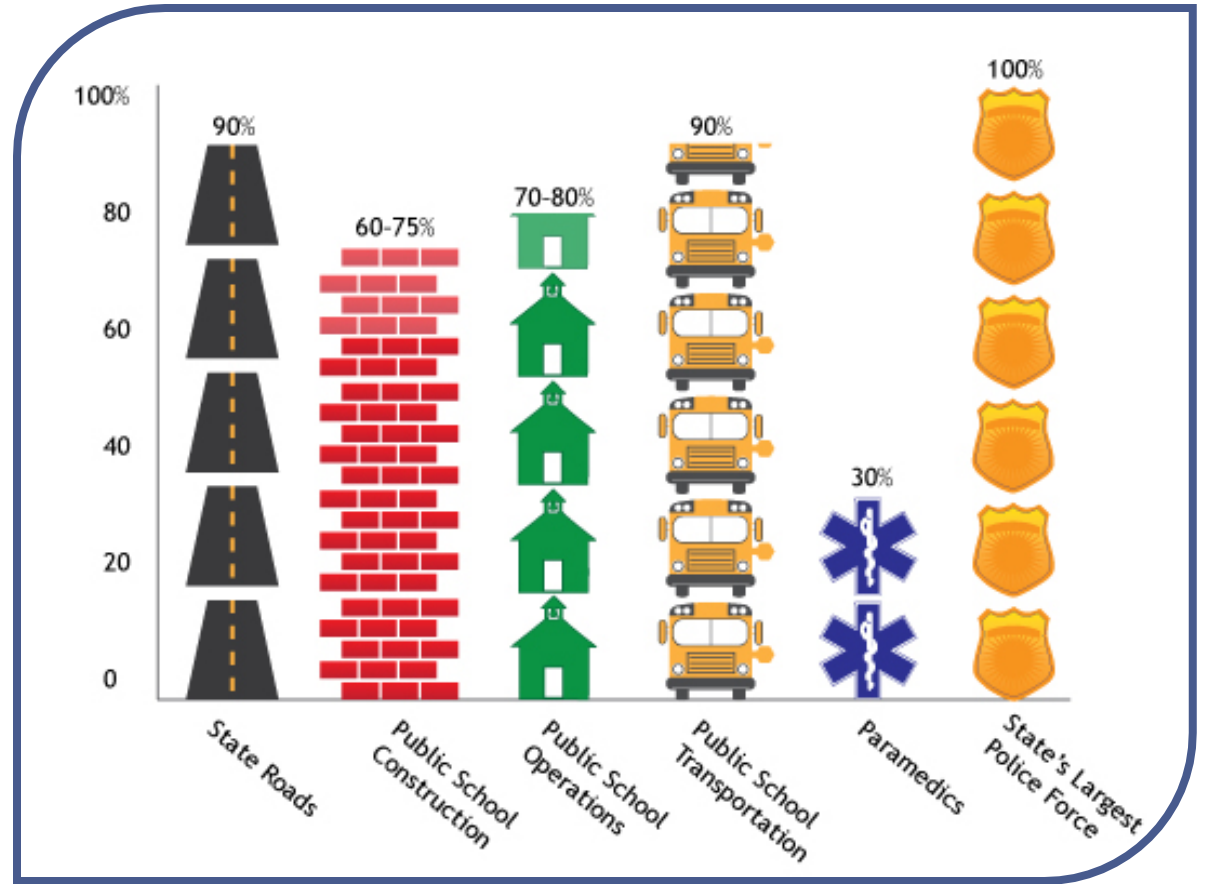
... The Committee shall consider matters relating to the orderly growth and development of the State, including, but not limited to:

Preparing the **Strategies for State Policies and Spending document and maps**, which shall serve as the primary policy guide that summarizes the State's land use goals, policies and strategies and directs State spending into investment levels that support the most efficient use of State resources, be they physical, fiscal, or natural, except that county and municipal governments shall retain their existing autonomy with respect to the land use designations set forth in their proposed and/or adopted comprehensive plans. The Strategies for State Policies and Spending shall be updated at least every five years, provided that the Governor may extend the deadline at his or her discretion.

Strategies Purpose

- To coordinate land use decision-making with the provision of infrastructure and services
- Why Coordinate:
 - Land use decisions are a local responsibility;
 - The provision of infrastructure and services is a State responsibility
 - If the above aren't coordinated, then waste and inefficiency can occur

STATE PAYS



Delaware Facts

- Number of Counties 3
- Number of Municipalities 57
- Land area – square miles 1,954
- Land area – acres 1,249,920
- Farm land – acres 490,000
- Persons per acre 1.4
- Population, 2010 Census 897,934
- Lane miles of highways 13,472

We are growing

- Projections indicate that:
 - Delaware will grow by 126,500 people between 2015 and 2040
 - The number of seniors in Delaware is projected to increase by 98% between 2010 and 2040.
 - The number of working aged adults in Delaware is only projected to grow by 11% during this same period
 - During the same period, there will be 72,300 new households (most requiring new housing units)

Source: Delaware Population Consortium Projections v. 2014.0 (population and household); v. 2012.0 (senior population)

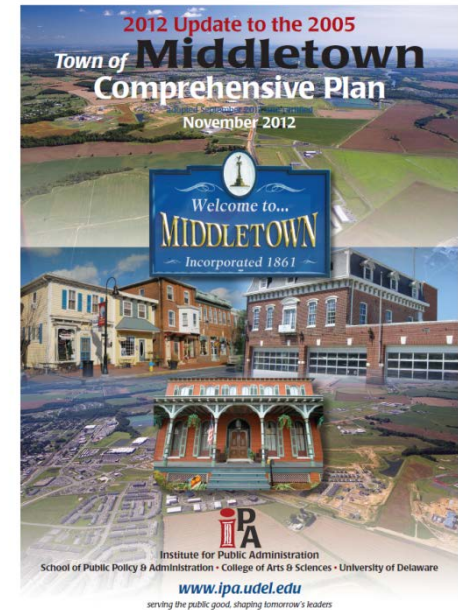
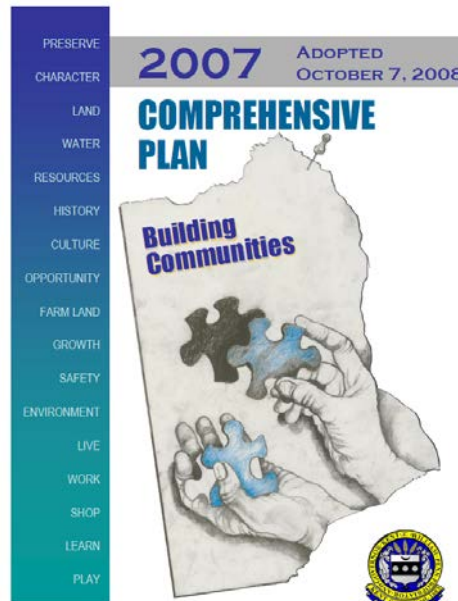
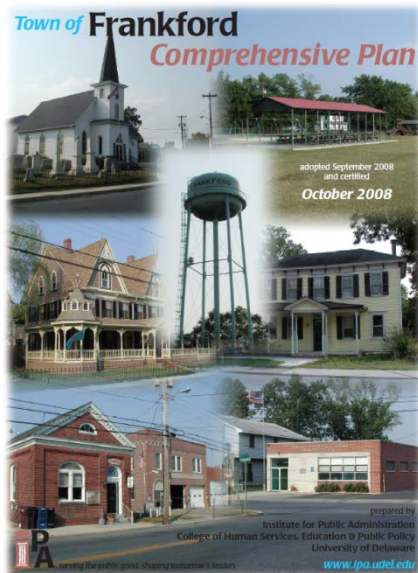
State Spending Strategies

Use by Agencies

Agency	PLUS	Capital Budget Requests and Reviews	School Site Approvals	Infrastructure and Public Facility Locations
Agriculture	X	X		
Economic Dev.	X	X		
Transportation	X	X		X
Health and Social Services	X	X		X
Natural Resources	X	X		X
Education	X	X	X	X
Housing	X	X		
Budget		X	X	
Planning	X	X	X	
Public Safety	X	X		X

State Strategies and Local Government Planning

- Local governments use the Strategies as they are developing their comprehensive plans
- Governor certifies plans based on consistency with State Strategies



Why Update

- Required by Delaware Code: Title 29, Chapter 91, Section 9101 (c) (5)
- To reflect current local certified comprehensive plans
- To use current data and technical tools
- Add new data, programs and policies
- And reevaluate and refine state policies

Our update process

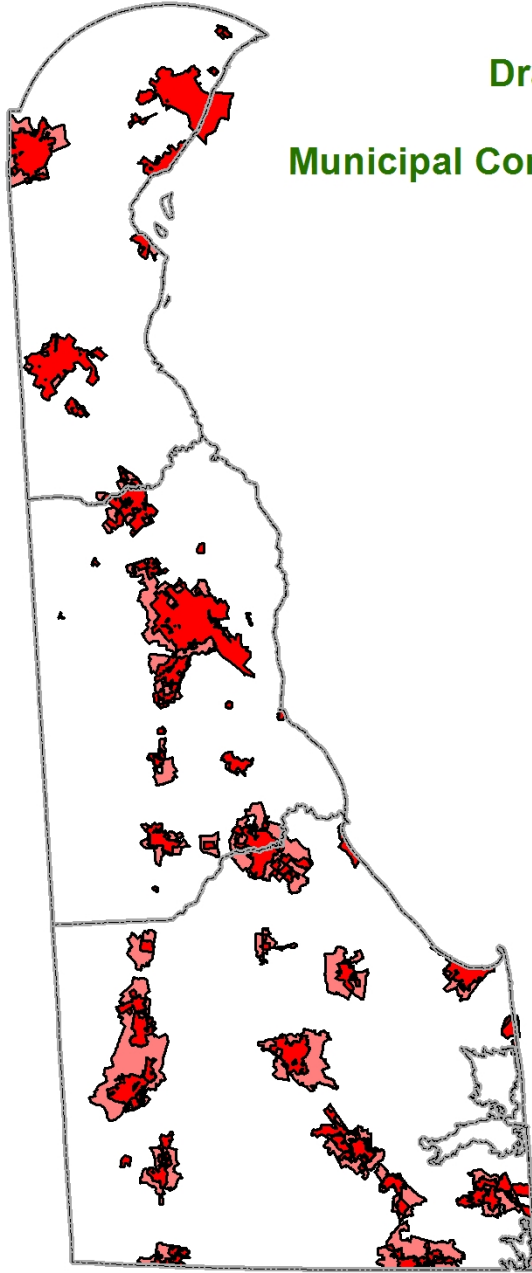
- Data collection
- Consult with state agencies, MPOs, counties, local governments
- GIS – apply appropriate map overlays, including certified comprehensive plan maps
- Public Workshops
- Review of draft document and maps
- Approval by the Cabinet Committee and the Governor

Data used to make maps include:

- School Sites
- Transit Routes
- Social Service Centers
- Police/Fire/EMS Facilities
- Corridor Capacity Preservation Areas
- Ag Preservation Districts
- Green Infrastructure
- Parklands
- Municipal and County certified comprehensive plans

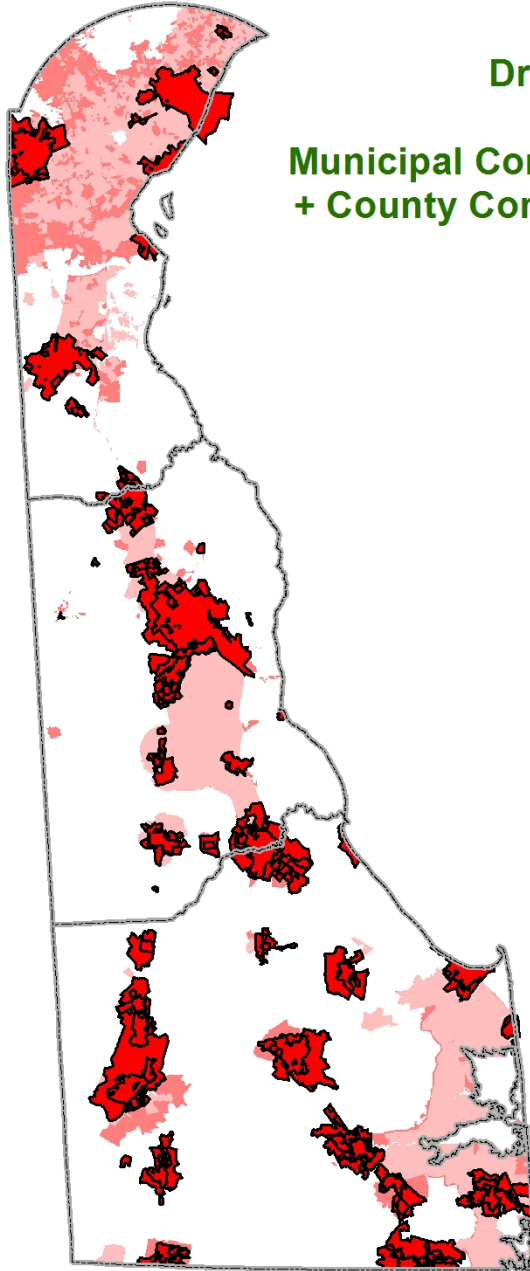
Draft 2015

Municipal Comprehensive Plans

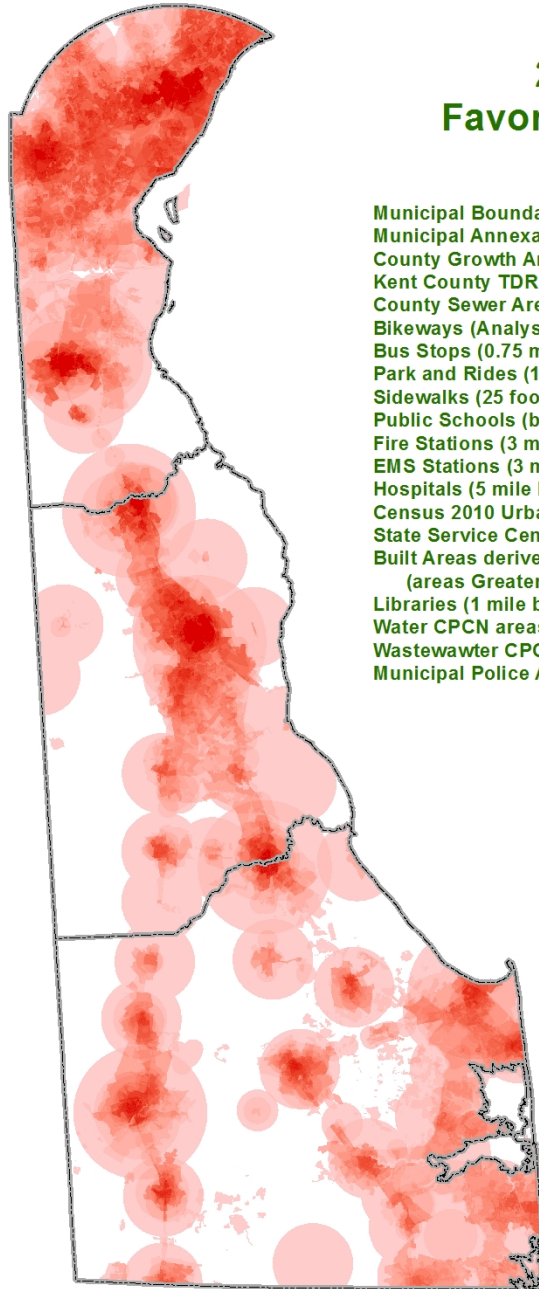


Draft 2015

**Municipal Comprehensive Plans
+ County Comprehensive Plans**

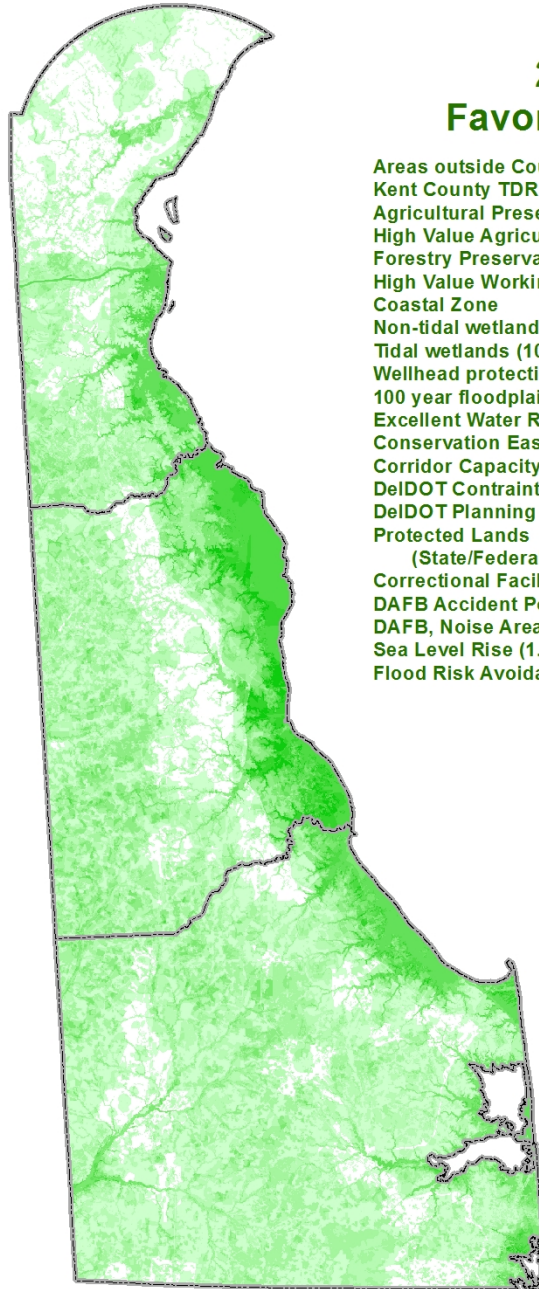


2015 DRAFT Favoring Development



Municipal Boundaries
Municipal Annexation Areas (Comprehensive Plans)
County Growth Areas (Comprehensive Plans)
Kent County TDR Recieving Areas
County Sewer Areas
Bikeways (Analysis from State Parks)
Bus Stops (0.75 mile buffer)
Park and Rides (1 mile buffer)
Sidewalks (25 foot buffer)
Public Schools (buffered)
Fire Stations (3 mile buffer)
EMS Stations (3 mile buffer)
Hospitals (5 mile buffer)
Census 2010 Urban Areas
State Service Centers (2 mile buffer)
Built Areas derived from 2012 LULC
(areas Greater than 350 contiguous acres)
Libraries (1 mile buffer)
Water CPCN areas (within Growth Zones)
Wastewawter CPCN (within Growth Zones)
Municipal Police Agencies

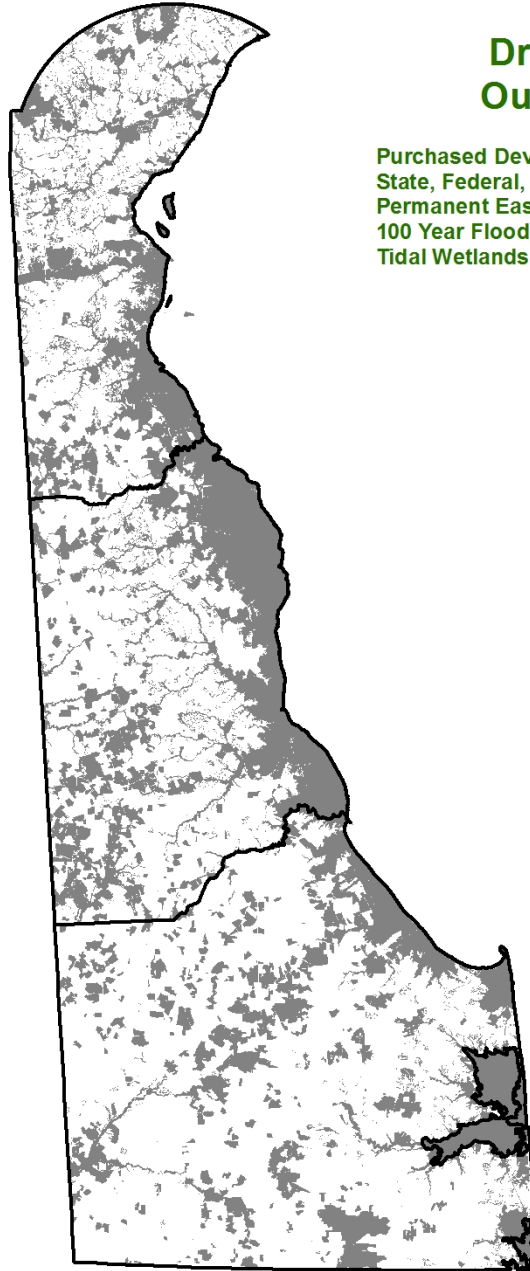
2015 DRAFT Favoring Preservation

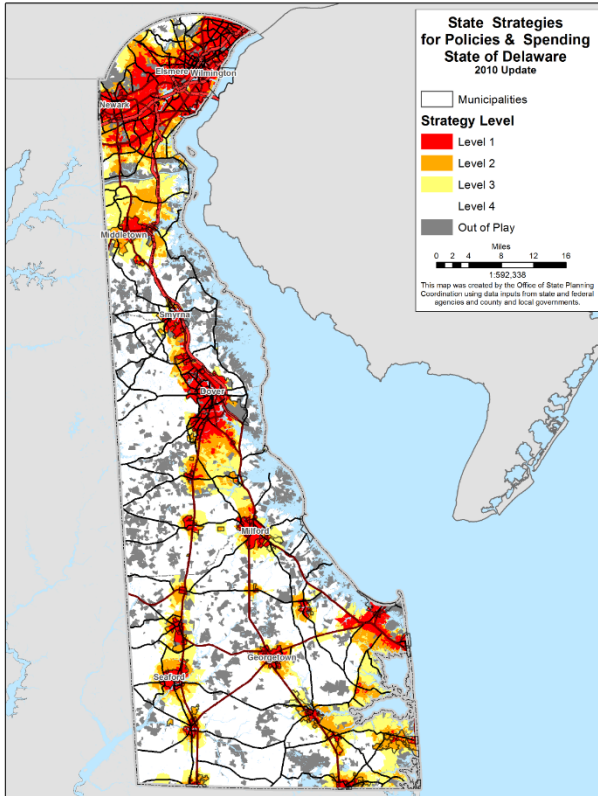


Areas outside County Growth areas
Kent County TDR sending areas
Agricultural Preservation Districts
High Value Agricultural Lands
Forestry Preservation areas
High Value Working Forest Lands
Coastal Zone
Non-tidal wetlands (100 foot buffer)
Tidal wetlands (100 foot buffer)
Wellhead protection areas
100 year floodplain
Excellent Water Recharge Areas
Conservation Easements
Corridor Capacity Preservation Parcels (owned)
DeIDOT Constraints
DeIDOT Planning Priority Area (Kent Co., east of Route 1)
Protected Lands
 (State/Federal/Municipal Owned and Public Open Space)
Correctional Facilities (1 mile buffer)
DAFB Accident Potential Zones (APZ)
DAFB, Noise Areas/AICUZ
Sea Level Rise (1.0 meter scenario)
Flood Risk Avoidance Map (FRAM)

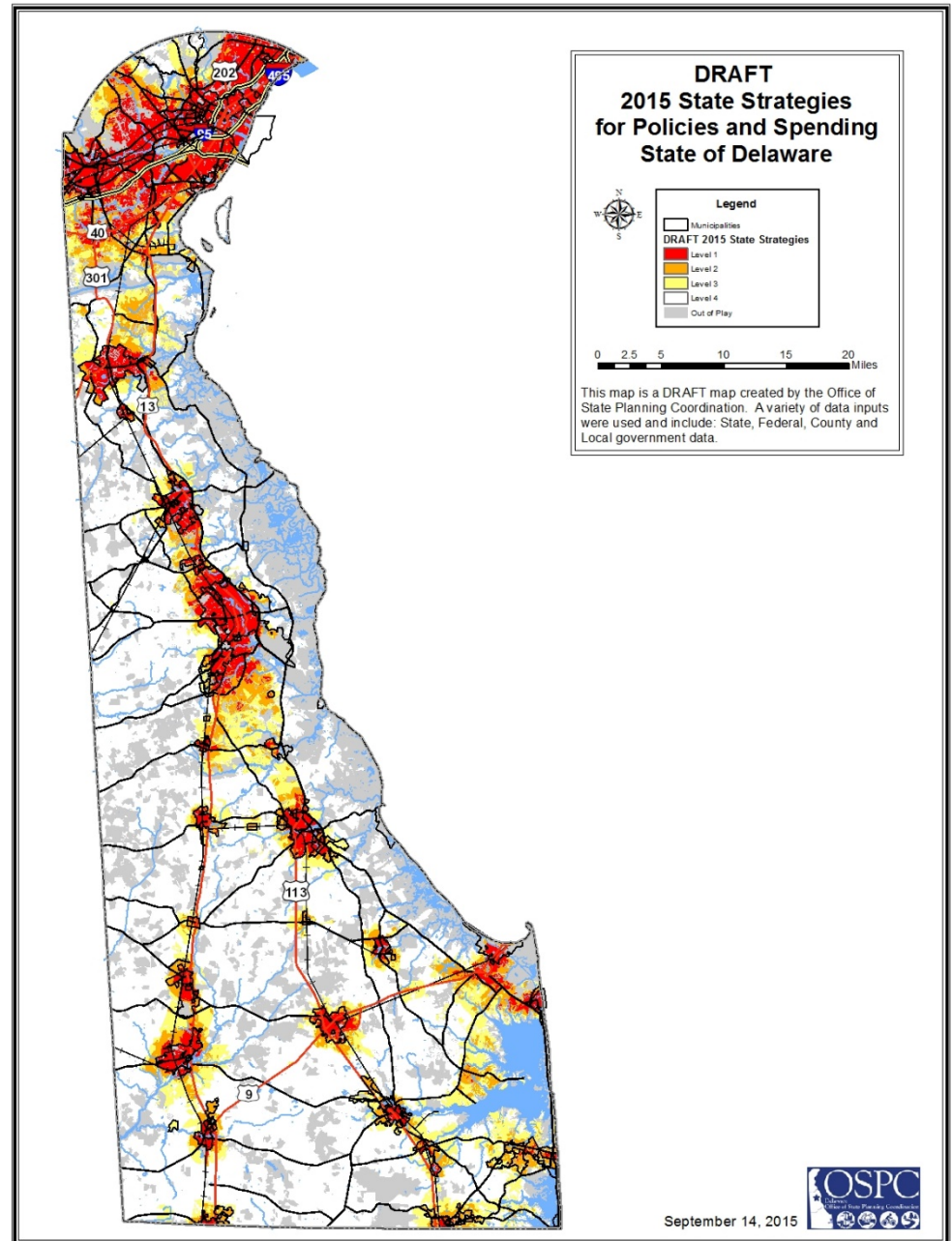
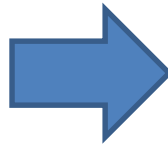
Draft 2015 Out of Play

Purchased Development Rights (PDR)
State, Federal, Local Publicly owned lands
Permanent Easements
100 Year Floodplains (NC, KC)
Tidal Wetlands





Existing 2010
Strategies



DRAFT 2015 Strategies

September 14, 2015

Components:

- Urban/Urbanizing Growth (Levels **1**, **2**, & **3**)
- Preservation and Rural (Level 4 [white areas])
- “Out of Play” (Grey areas)

Level 1:

Overlook, Dover



Main Street, Newark



Union Park Gardens, Wilmington



Wilmington

Level 2:



Paynter's Mill, Milton



Cannery Village, Milton



Pike Creek, New Castle County



The Village of Five Points, Lewes

Level 3:



Level 4:



Out of Play:



Some Final Thoughts

- These maps are not parcel based
 - You must check with local government for information about use and development of specific parcels
 - Even in growth oriented Investment Levels, not all parcels can or should be developed. Again, check with local government

Some Final Thoughts

- Circumstances may exist, on a case-by-case basis, where State and other investments may be warranted to address unforeseen circumstances involving public health, safety or welfare.

Projected Timeline

- Public Comment Period **October 1 – November 4**
- Public workshops **October 2015**
- Redraft based on workshops **November 2015**
- Final Presentation to CCSPI **TBD**
- Governor approval of Strategies **TBD**
- Final document posted to Website **TBD**

How to Comment:

Comments Deadline: November 4, 2015

- Comment on the OSPC website:
www.stateplanning.delaware.gov

- Or, mail comments to:

Office of State Planning Coordination

122 Martin Luther King, Jr. Blvd. S.

Dover, DE 19901

Contact Information

- **Kent County** David Edgell, AICP
david.edgell@state.de.us
- **New Castle County** Herb Inden
herb.inden@state.de.us
- **Sussex County** Dorothy Morris, AICP
dorothy.morris@state.de.us
- **Data and Mapping** Miriam Pomilio
miriam.pomilio@state.de.us

Public Review Draft – October 2015

2015

Delaware

Strategies for State Policies and Spending

Prepared by:
Delaware Office of
State Planning Coordination

Approved by:
Cabinet Committee on
State Planning Issues

*Thank you for
visiting our website
to learn more about
the Strategies for
State Policies and
Spending*