





Legend

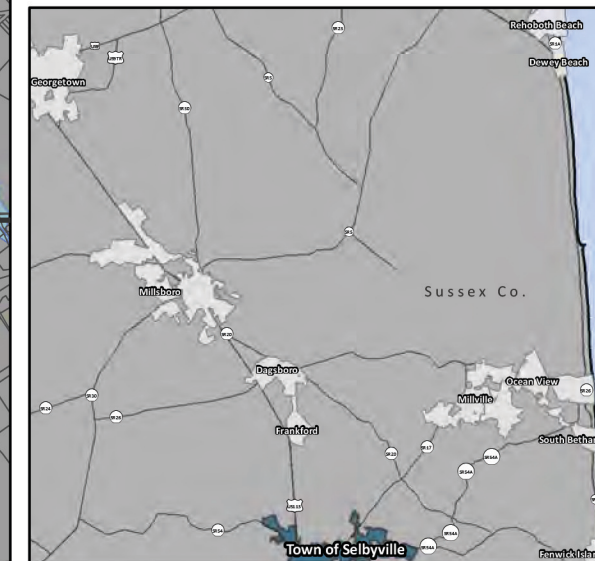
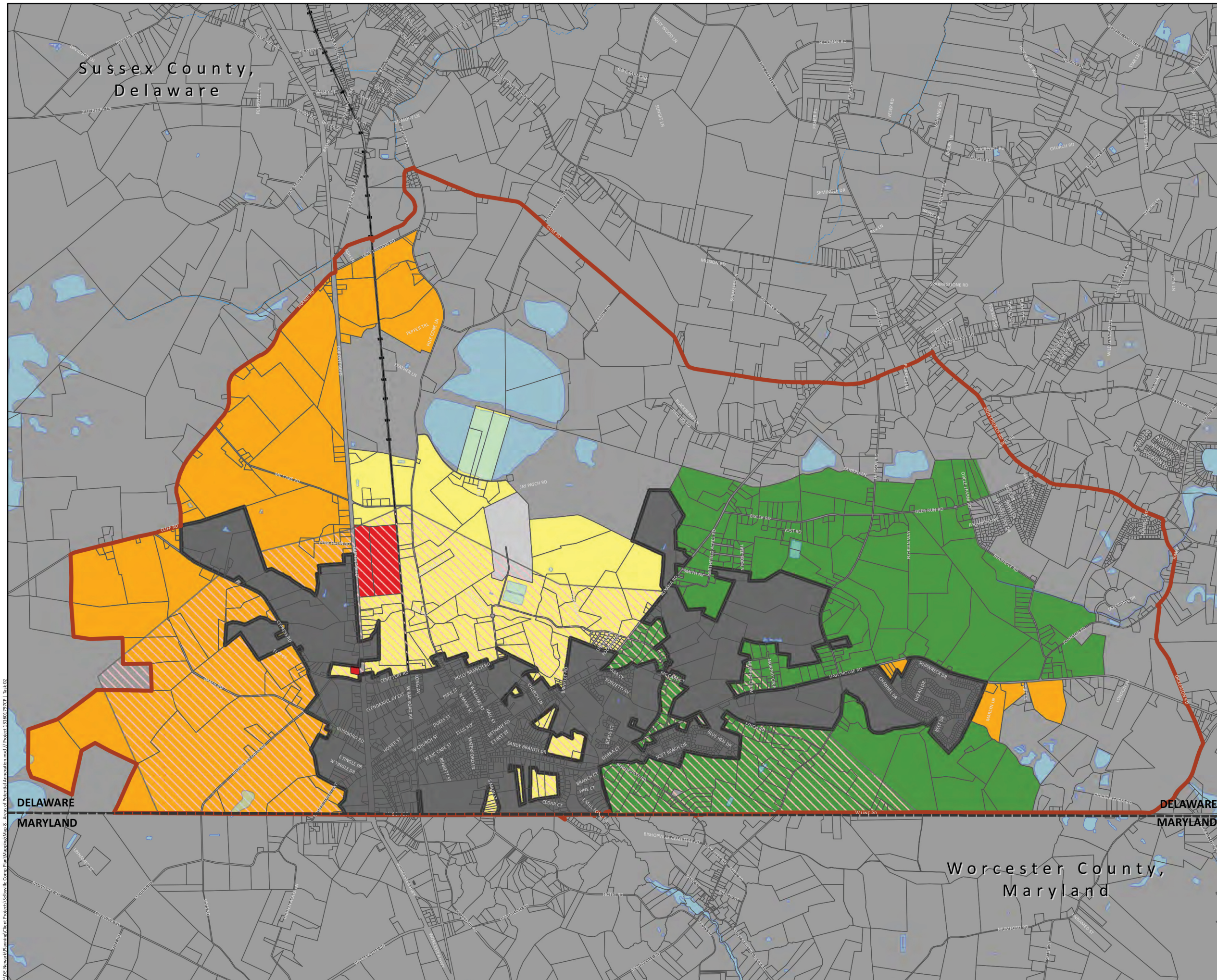
- Town of Selbyville
- Parcels
- Water Bodies
- Railroad
- Intergovernmental Coordination Zone
- Secondary Developing Areas
- Future Land Use**
- Commercial
- Mixed Residential/Agriculture
- Mixed Residential/Commercial
- Residential
- Utility Expansion

Map Revisions

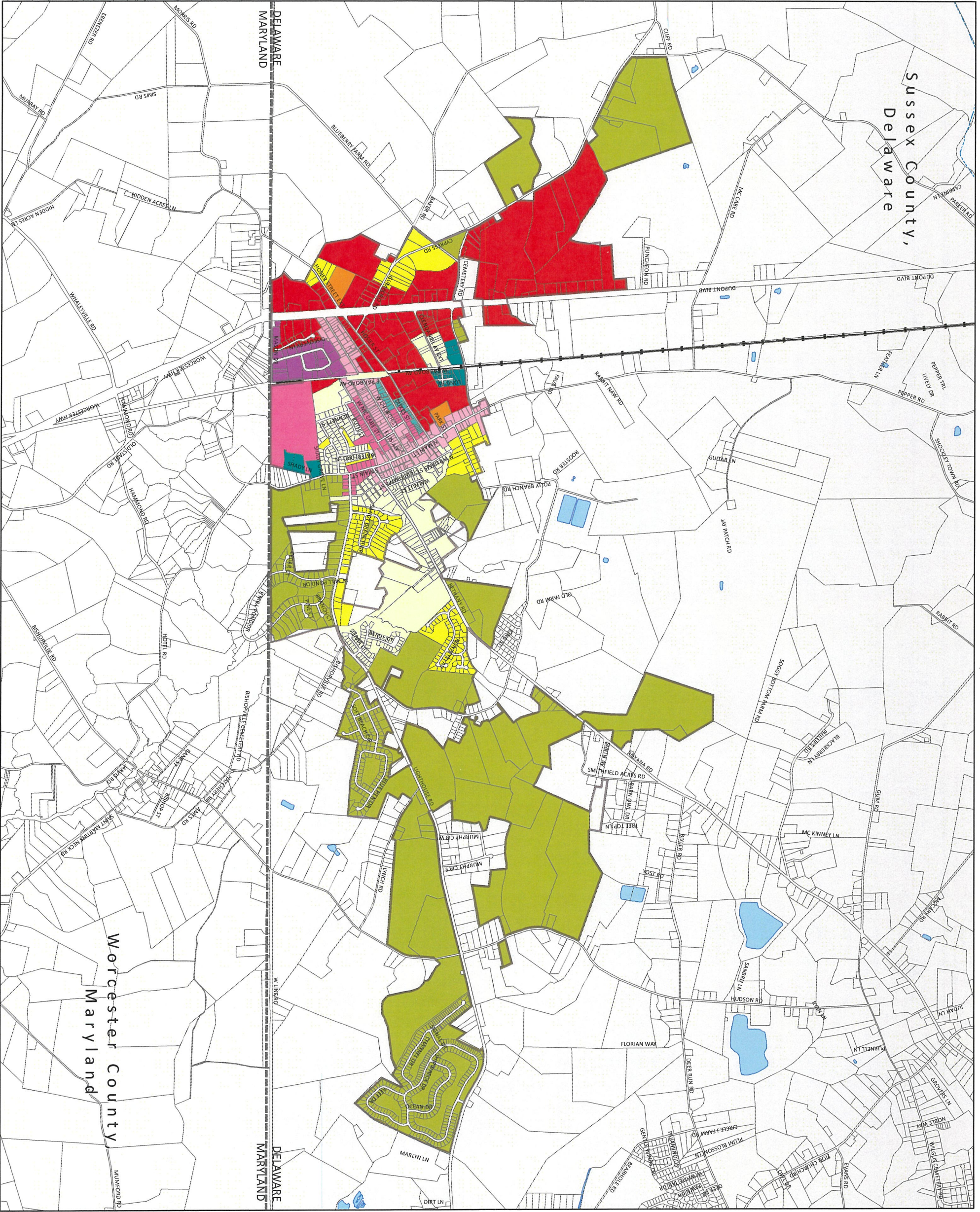
2/20/2018 Original  
11/26/2019 Town Updates  
12/17/2019 Updated

Data Sources

Municipal Boundary: OSPC/FirstMap (7/2018)  
Parcels: Sussex County (12/2017)  
Parcels: Worcester County/MDP (2016)  
Railroad: DE Transit Corp/FirstMap (2016)  
FLU for Annexation Areas: Town (2007)  
Secondary Developing Areas: Town (2007)  
Intergovernmental Coordination Area: Town (2007)  
Street Names/Centerlines: Sussex County (12/2017)  
Water Bodies: USGS/FirstMap (2014)



V:\GIS\Newark\Planning\Clear Project\Selbyville Comp Plan\Map\Map 8 - Areas of Potential Annexation.mxd // Project 13160197.rpt 1/14/20



**Legend**

- Town of Selbyville
- Parcels
- Railroad
- Water Bodies
- Zoning**
- R-1 Residential District
- R-2 Residential District
- R-3 or R-4 Residential District
- MR Multifamily Residential District
- DR Duplex Residential District
- MH Mobile Home Park Residential District
- HR Historic Residential District
- HB Historic Business District
- GC General Commercial District
- IP Industrial Park District

**Map Revisions**

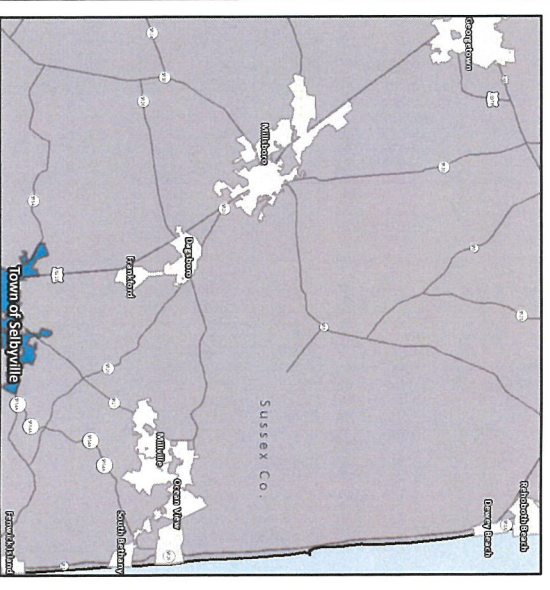
- 2/20/2018 Original
- 11/26/2019 Town Updates
- 12/17/2019 Updated

**Data Sources**

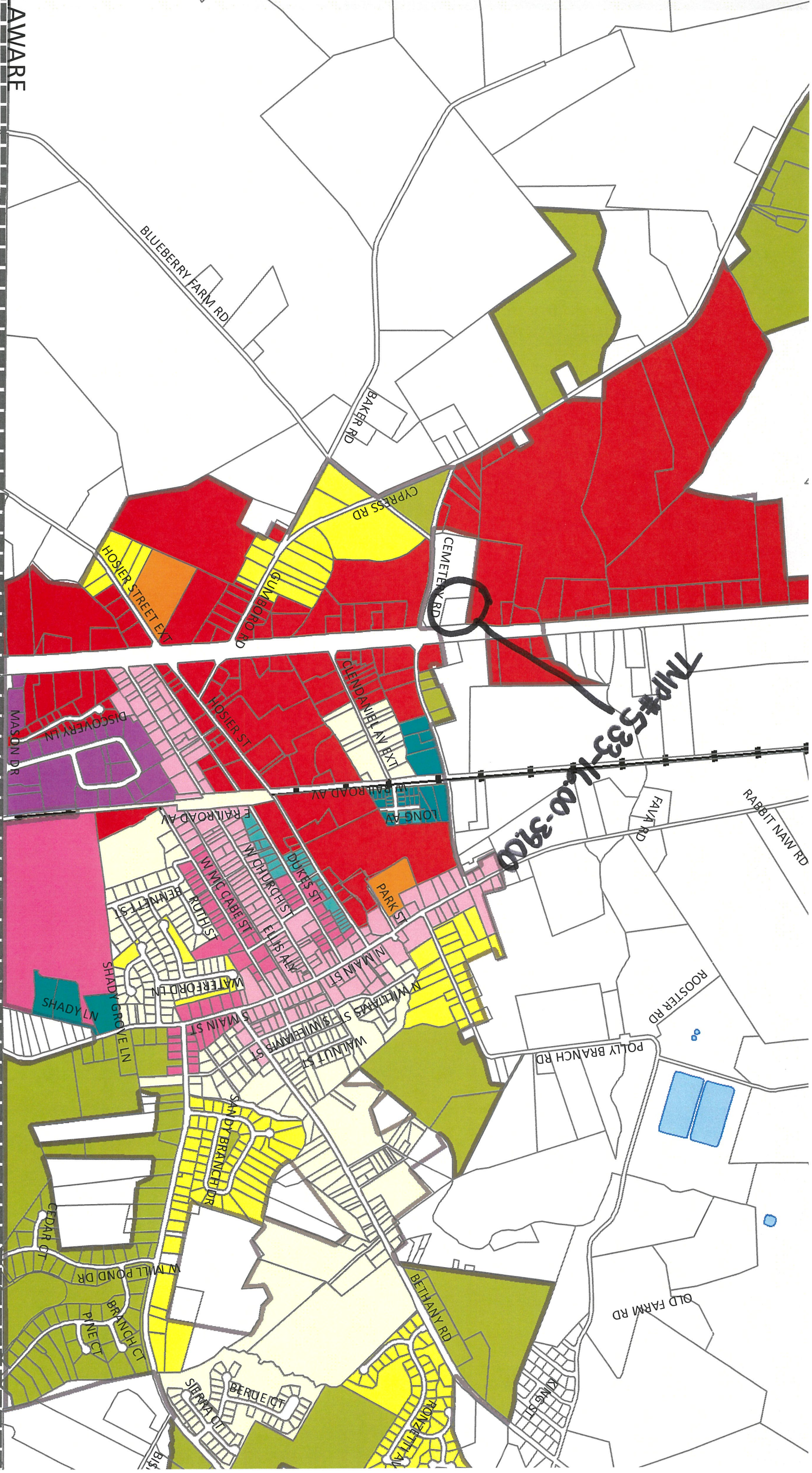
- Municipal Boundary: OSPC/FirstMap (7/2018)
- Parcels: Sussex County (12/2017)
- Parcels: Worcester County/MDP (2016)
- Railroad: DE Transit Corp/FirstMap (2016)
- Zoning: Town (2018)
- Street Names/Centerlines: Sussex County (12/2017)
- Water Bodies: USGS/FirstMap (2014)

**Notes**

This map is provided by KCI solely for display and reference purposes and is subject to change without notice. No claims, either real or assumed, as to the absolute accuracy or precision of any data contained herein are made by KCI, nor will KCI be held responsible for any use of this document for purposes other than which it was intended.



UNLAWFUL



719-533-140-3900

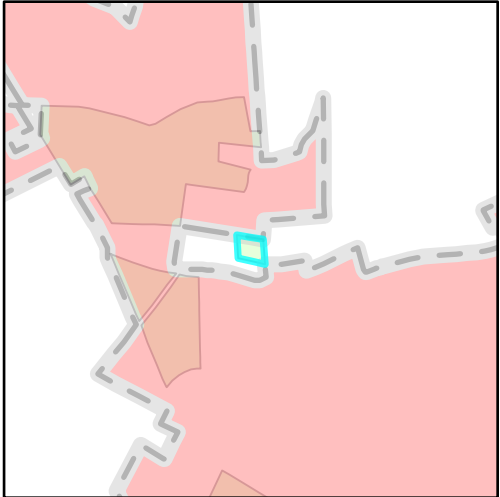
# Preliminary Land Use Service (PLUS)

2023-01-08 Mumford Property TMP# 533-16.00-39.00



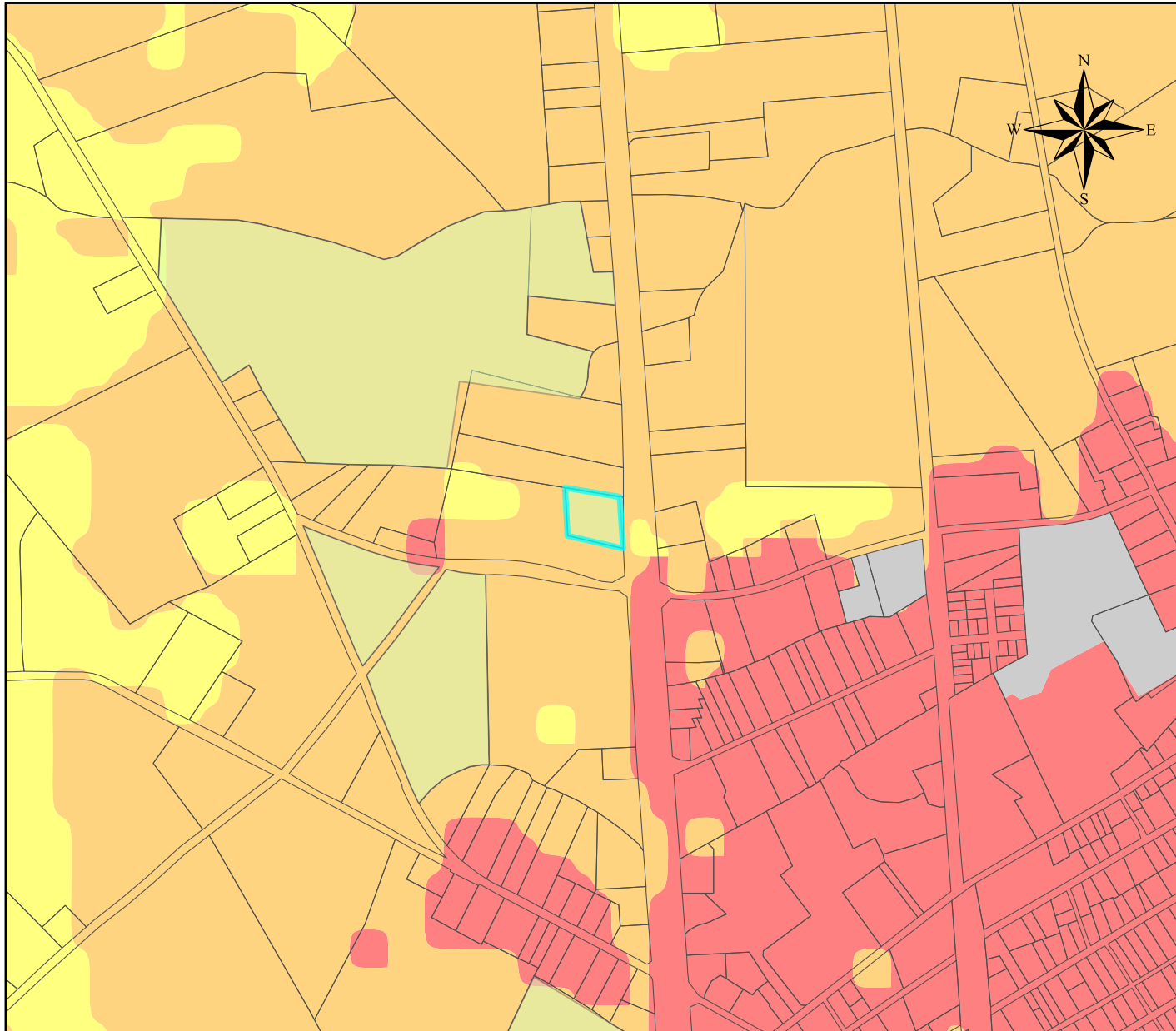
## Legend

 PLUS Project Areas



# Preliminary Land Use Service (PLUS)






2023-01-08 Mumford Property TMP# 533-16.00-39.00



## Legend

 PLUS Project Areas

### 2020 State Strategies

-  1
-  2
-  3
-  4
-  Out of Play

